

2019

ANNUAL
REPORT

PLATFORM
AN INITIATIVE OF
EASTERN RIVERINA ARTS
IN COLLABORATION WITH
iIdeas.
PLATFORM ACKNOWLEDGES THE SUPPORT OF
STEVE HANFIELD MELLING
Minta Viski

PLATFORM
AN INITIATIVE OF
EASTERN RIVERINA ARTS
IN COLLABORATION WITH
iIdeas.
PLATFORM ACKNOWLEDGES THE SUPPORT OF
STEVE HANFIELD MELLING
Minta Viski

About

EASTERN RIVERINA ARTS

Eastern Riverina Arts (ERA) is the bedrock for arts and cultural development throughout our region.

ERA works within these communities to support creative practitioners, stimulate creative activity and increase participation in the arts. In this way, we seek to be an exemplar of regional arts practice and facilitation and support the diverse cultural ecosystems across our region.

We work in collaboration with the eight Local Government Areas of Bland, Coolamon, Cootamundra-Gundagai, Lockhart, Junee, Snowy Valleys, Temora and Wagga Wagga. We're part of a unique network of arts organisations across regional New South Wales.

ERA is part of the NSW Regional Arts Network.



PLATFORM

Project Profile

PLATFORM

Since its launch in March 2019, **PLATFORM** has enhanced events across the Riverina at Wyalong, West Wyalong, Tumut, Wagga Wagga and Lockhart.

PLATFORM is an inclusive and accessible art installation space in a 40-foot shipping container. It adds appeal and inclusion to festivals and events as a sensory space, chill-out area, exhibition space or even a small stage. It often travels with EZY DUN, a portable accessible bathroom.

PLATFORM is designed to grow the capacity of communities to deliver inclusive and accessible events that anyone can attend, by providing strategic projects and accessibility training to local councils, event committees, organisers and volunteers.

Each time **PLATFORM** is installed at an event or festival, our curators work with local artists of all abilities to create exhibitions and performances in and around **PLATFORM**.

PLATFORM is an initiative of Eastern Riverina Arts funded by the National Disability Insurance Agency's Information, Linkages and Capacity Building program. PLATFORM is delivered in collaboration with IDEAS

Image: PLATFORM



www.platformriverina.com



Project Profile

LAGOON

The **LAGOON Project** is an intergenerational project helping to reconnect local First Nations men to cultural and traditional practices.

Canoe making will be a feature of this project, alongside spear and trap making.

Starting in September 2019, Eastern Riverina Arts commenced the project with recruitment of Marcus Wright in the role of Aboriginal Cultural Producer, and the formalisation of our project partnership with Shane Herrington of NSW National Parks and Wildlife Service.

LAGOON will deliver canoe, spear and trap making workshops for men and school students across the region, and the production of 3 traditional canoes, which will be displayed to the public during the Artstate conference and festival in 2020.



Australian Government
Indigenous Languages and Arts



Practice

PROFESSIONAL DEVELOPMENT FOR CREATIVES

- Capacity building workshops were delivered in partnership with Wagga Business Enterprise Centre.
- Our '*Creative Bites*' lunch time sessions featured quick talks on contracts, tax, funding, marketing and more.
- A dedicated seminar with commercial gallery owner Chris Hodges on *The Art of Selling Art* was held in Coolamon to over 40 artists from our region.

Shift

HOSTED BY ERA

Over 80 people gathered at the Coolamon Up-To-Date Store to hear inspiring presentations from Wesley Enoch (director of Sydney Festival), S. Shaktidharan (Award-winning playwright and director), Ros Abercrombie (CEO of Regional Arts Australia) and a bevy of local presenters.

Together we connected, hatched new ideas and spoke about the power of the arts and stories in these times, under the watchful pen of poet-in-residence Lachlan Brown.



SHIFT

CREATE/CHANGE

Mobile Office

ERA held more than 40 meetings with individuals, groups and councils across the region to discuss project development, funding and promotion.



IMAGE: Lino print by Raeleen Pfeiffer one of the ERA Window Gallery featured artists in 2019



Window Gallery

In 2019 we gave a range of established and emerging artists from across our region main street exposure in our Window Gallery.

Artists featured:

- Raeleen Pfeiffer (Lockhart)
- Yianni Johns & Marita Macklin (Coolamon)
- Robyn Sweeny & Jodie Stewart (Snowy Valleys)
- Mitch Bowman (Junee)
- Ralph Tikkerpae (Bland)
- Rose Quartz and Jeremy Kruckel (Wagga Wagga)

“Announcement

In 2019 Wagga Wagga and the Riverina were announced as the host region for **Artstate 2020**.

A four day festival and conference showcasing arts and cultural practice in our region will be held in November 2020.

CASP

COUNTRY ARTS SUPPORT PROGRAM

Six community groups and Local Councils across our region shared in \$18,000 for grass roots arts projects in 2019 including:

- establishment of a string orchestra and a youth-led public art project in Cootamundra-Gundagai
- a mosaic mural and inter-generational magazine project in Lockhart
- a two-day textile workshop in Coolamon
- an arts and disability forum and exhibition by June artist Kellie Hulm in Wagga Wagga.

Coming in 2020: Projects by Spirit of the Land Festival (Lockhart), Create Hub Riverina (Wagga Wagga), Riverina Summer School of Strings (Wagga Wagga), Tumut Art Society (Tumut) and Artists on Parade (Tumbarumba).



IMAGE: Cootamundra Strings, recipients of CASP funding in 2019.

Auspiced Projects

ERA continues to provide support to artists and groups through our auspicing program, ensuring that everyone has access to local and state funding programs. In 2019 ERA auspiced projects for:

Riverina Fresh Feed – the establishment of a young writers group

A few Quite Ales – development of a new play for touring through our region

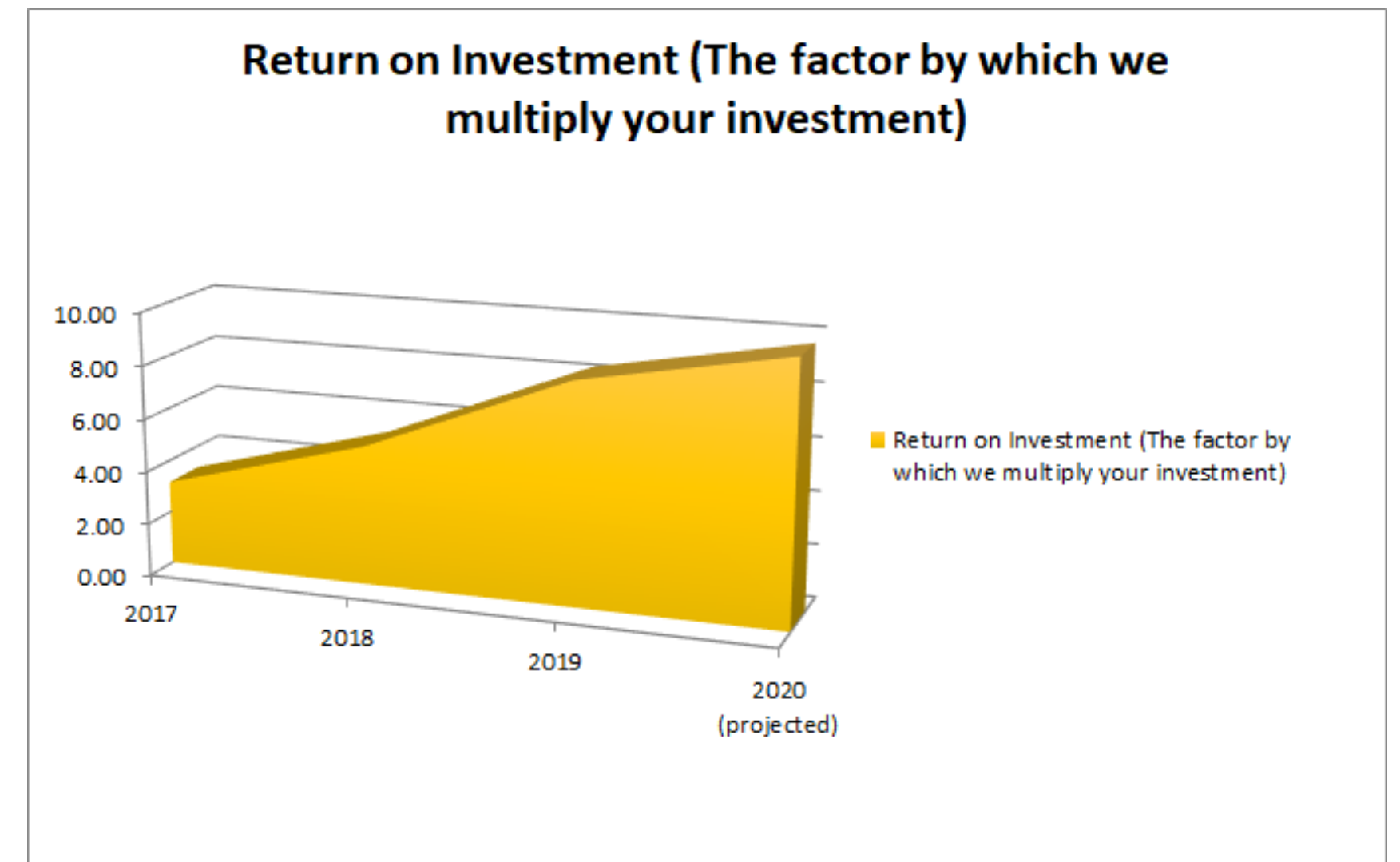
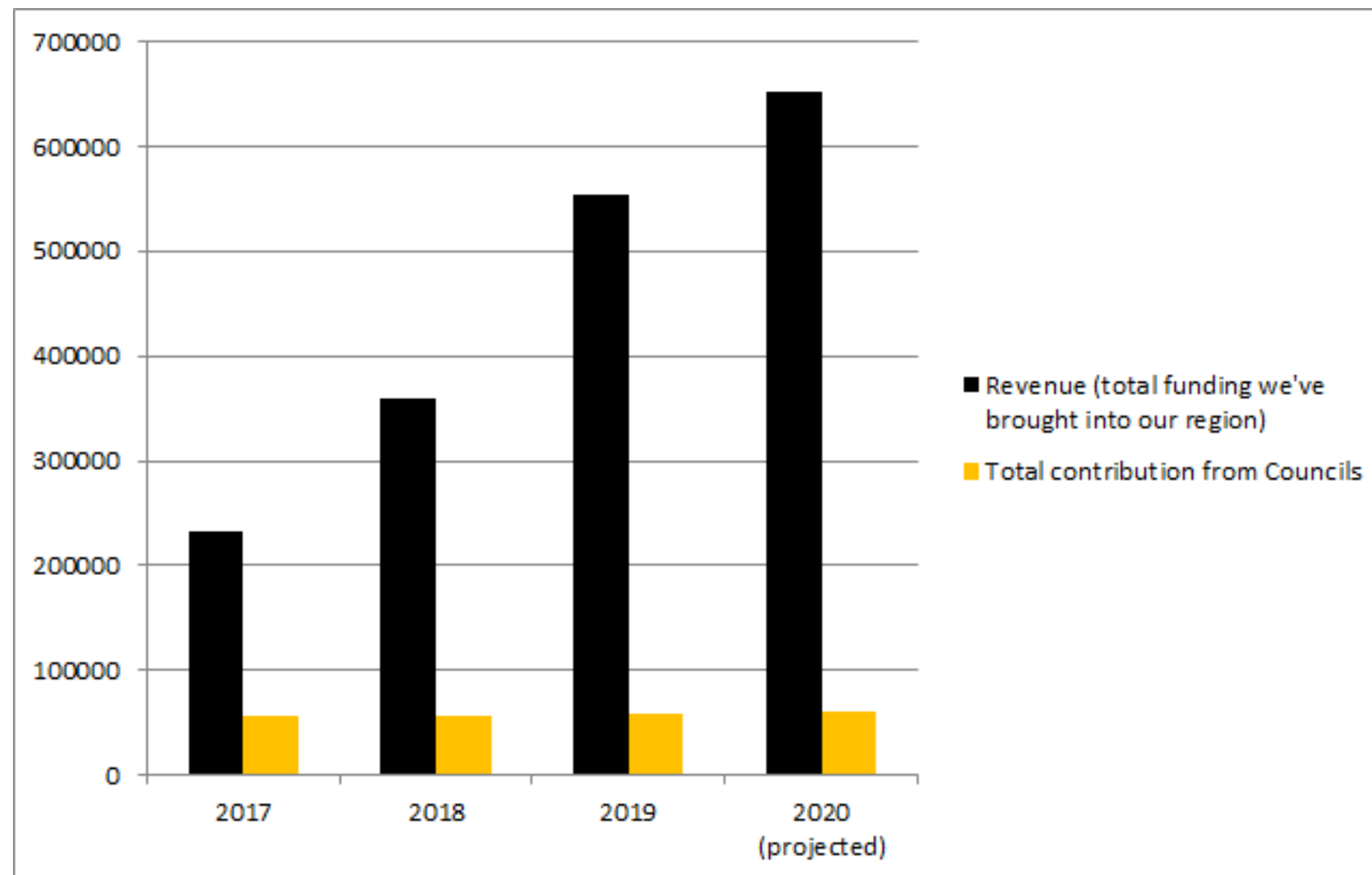
Tempo – a young music development program

A number of youth led music events

Return on Investment

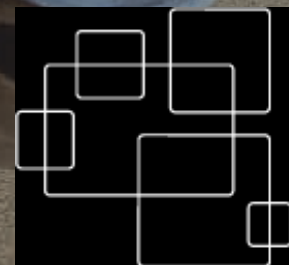
While you can't put a dollar value on the benefits of culture, Eastern Riverina Arts delivers stellar returns on the investments of our member councils. We create and lead projects that deliver economic and social benefits to all our member councils.

We used to triple your contribution, now we multiply it tenfold.



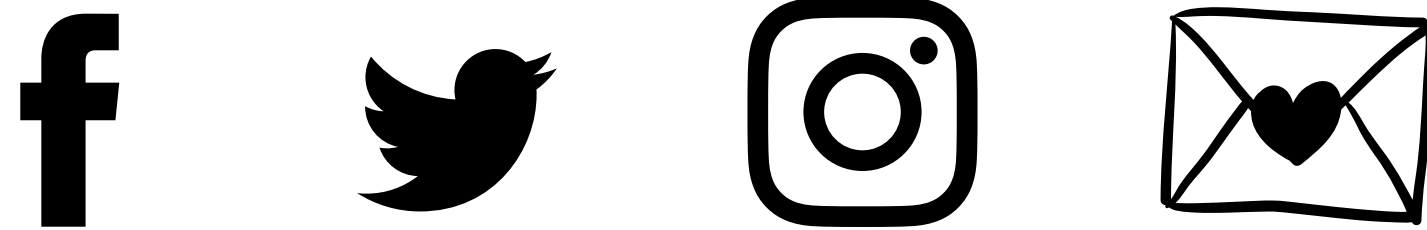
A photograph of an outdoor arts festival. In the center, a crowd of people, including men, women, and children, are gathered around a large, dark-colored shipping container that has been repurposed as an art installation. The container is decorated with colorful, spherical ornaments and has a green wall section. To the left, a white tent with the letters 'RL' and the word 'Independent' is visible. In the background, there are trees and a clear sky. The overall atmosphere is lively and community-oriented.

Supporting creative practitioners,
stimulating creative activity and
increasing participation in the arts.



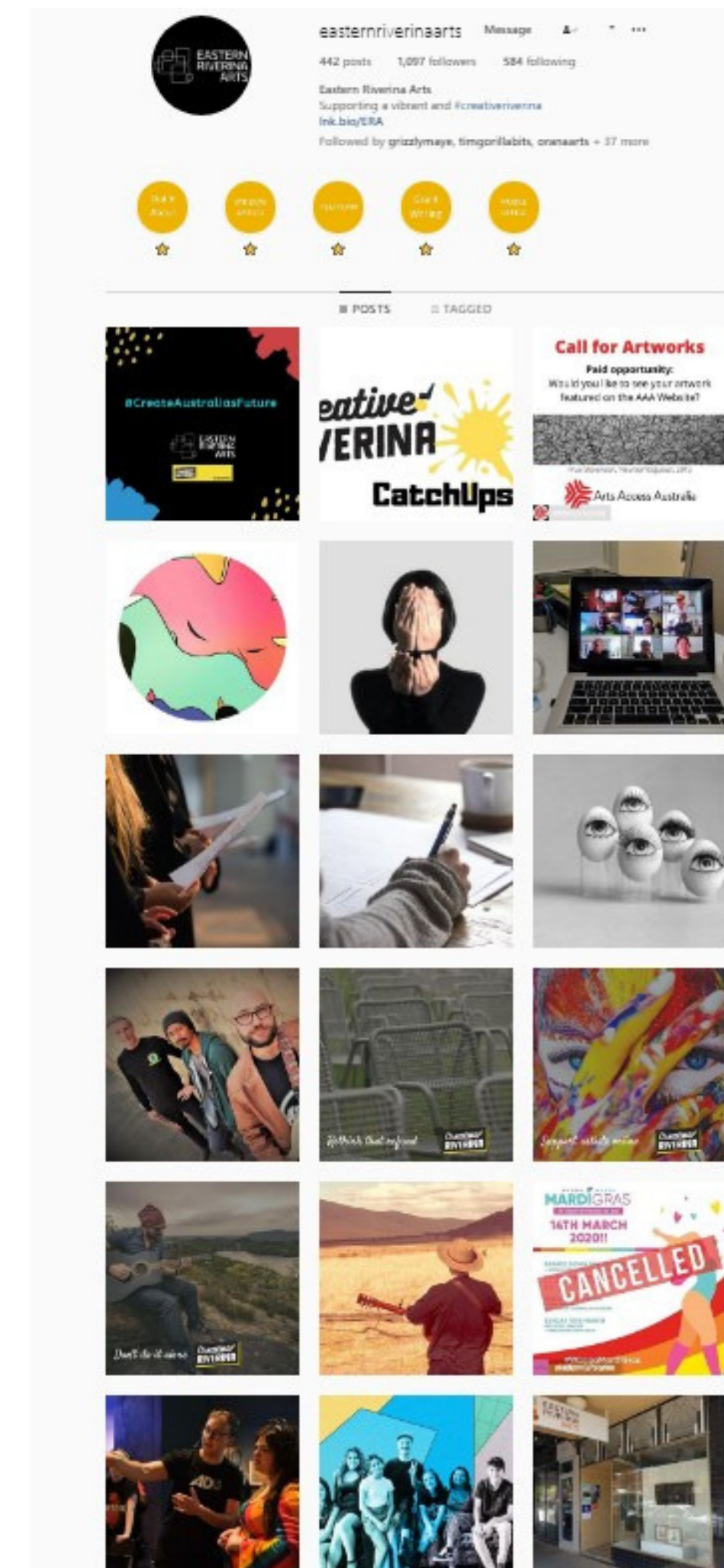
**EASTERN
RIVERINA
ARTS**

Staying connected



ERA continued in 2019 to be active on social media and released monthly e-newsletters for subscribers.

Subscriptions mailing lists are also utilised to promote special events, workshops and initiatives.



Eastern Riverina Arts is supported by the NSW Government through CREATE NSW



Eastern Riverina Arts is a member of REGIONAL ARTS NSW



Eastern Riverina Arts acknowledges the financial and in-kind support of its member Councils

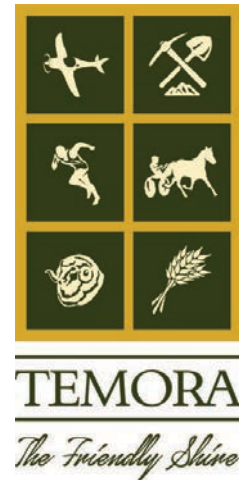
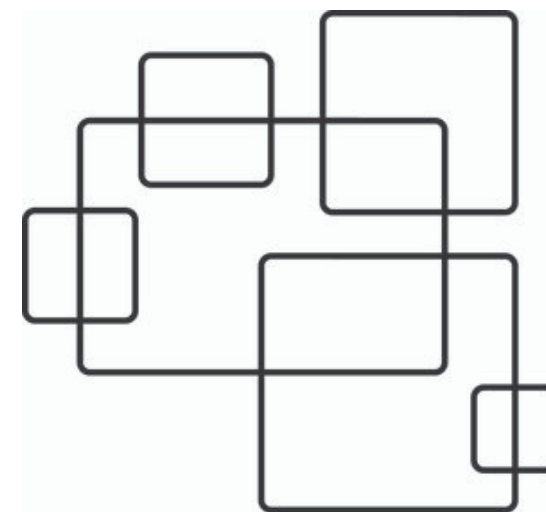


IMAGE: Lanterns on the Lagoon, Tumut.



IMAGE: Fanny Lumsden and Thrillseeker Dan performing in the ERA shopfront on the eve of their Country Halls Tour.



EASTERN RIVERINA ARTS

WWW.EASTERNRIVERINAARTS.ORG.AU

PHONE

+61 2 6921 6890

LOCATION

98 Fitzmaurice Street
WAGGA WAGGA NSW 2650

EMAIL ADDRESS

info@easternriverinaarts.org.au

ABN 93 195 464 075